



Flat 3,  
7 Raleigh Avenue, St. Helier, JE2 3ZG

**Asking price £485,000**



**SHARE TRANSFER** – Reside are delighted to present this well maintained and character filled two bedroom first floor apartment, ideally situated on Rayleigh Avenue in St Helier.

Boasting high ceilings and large windows throughout, the property is filled with natural light, creating a warm and welcoming atmosphere. The apartment features a cosy yet spacious lounge/diner and a separate, modern kitchen.

Both bedrooms are generously sized doubles, with the principal bedroom benefiting from built in wardrobes. A contemporary house bathroom completes the apartment.

Externally, the property includes parking for two vehicles and a private outdoor storage unit.

Perfectly positioned within walking distance of the town centre and all local amenities the apartment would be a perfect first time purchase or investment.

RES362



reside.je

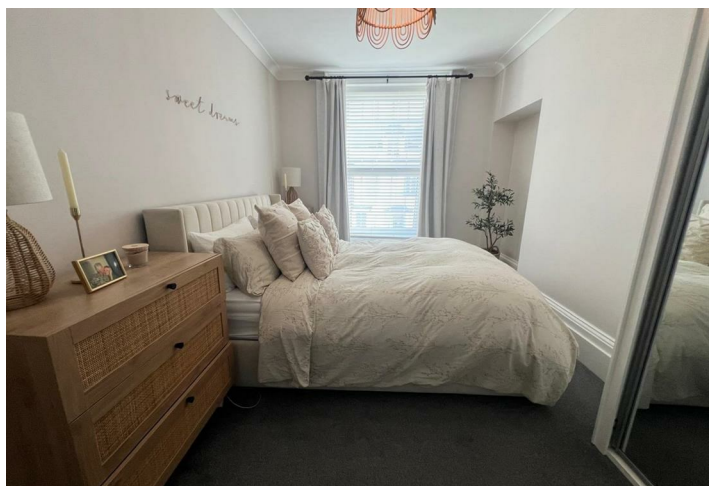
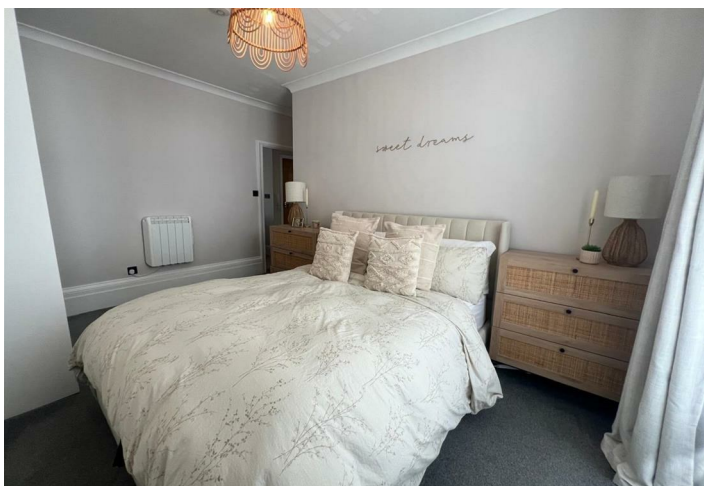


info@reside.je



07797737773





reside.je

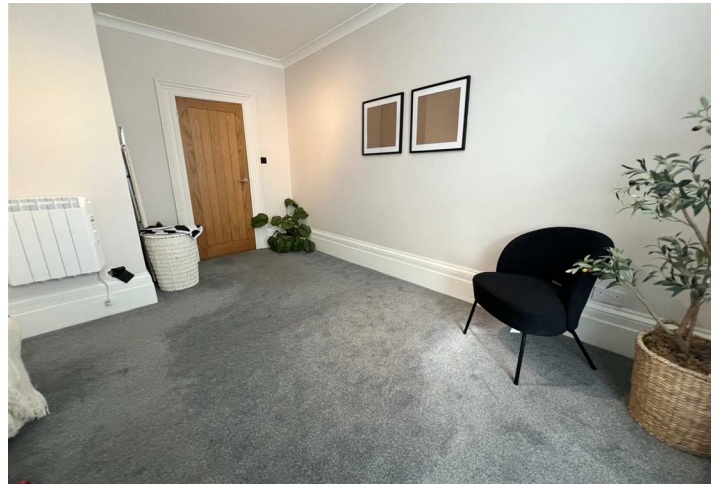


info@reside.je



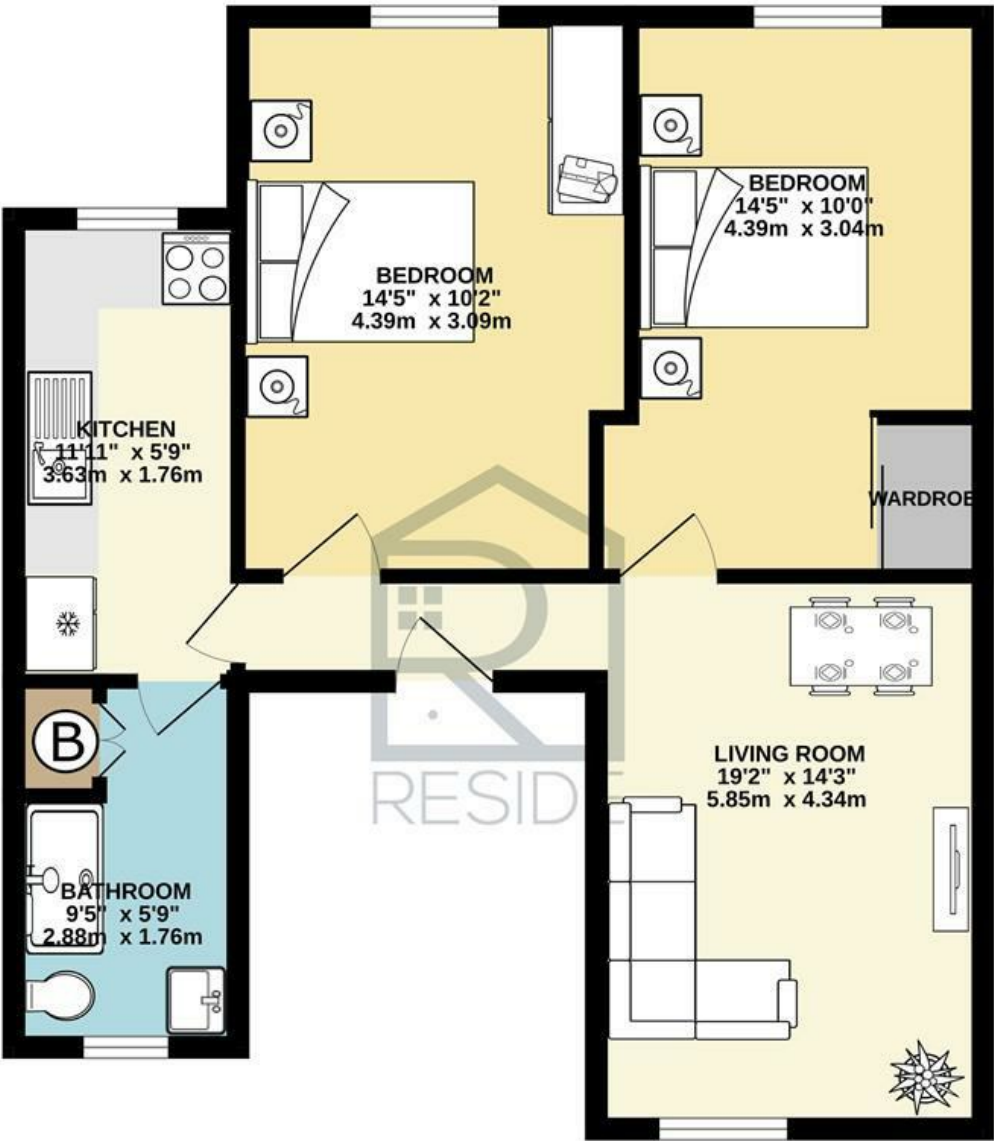
07797737773





Floor Plan

GROUND FLOOR  
567 sq.ft. (52.7 sq.m.) approx.



TOTAL FLOOR AREA : 567 sq.ft. (52.7 sq.m.) approx.

Whilst every attempt has been made to ensure the accuracy of the floorplan contained here, measurements of doors, windows, rooms and any other items are approximate and no responsibility is taken for any error, omission or mis-statement. This plan is for illustrative purposes only and should be used as such by any prospective purchaser. The services, systems and appliances shown have not been tested and no guarantee as to their operability or efficiency can be given.  
Made with Metropix ©2025



reside.je



info@reside.je



07797737773

## Key Information

- Two double bedroom first floor apartment
- Share transfer
- High ceilings and large windows
- Spacious lounge/diner
- Separate modern kitchen
- Parking for two cars
- Outdoor storage unit
- Walking distance to town centre and local amenities
- Electric heating
- Service charge £100pcm

## Directions

Heading up Raleigh Avenue, the property is 60 yards up on your LHS

